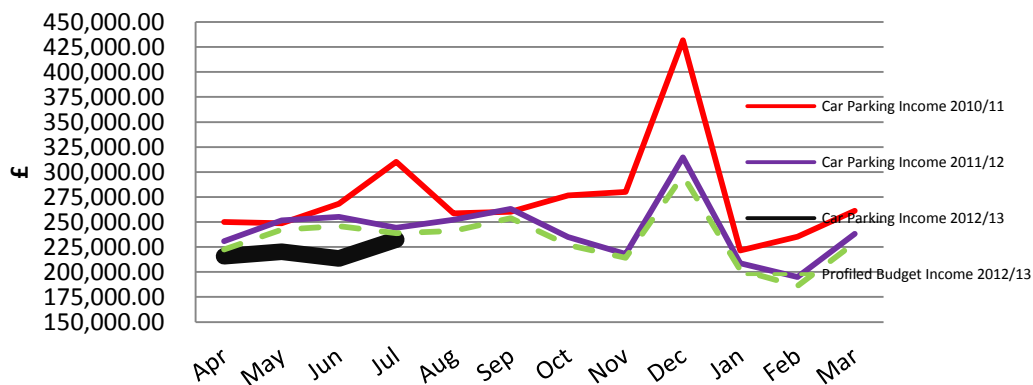
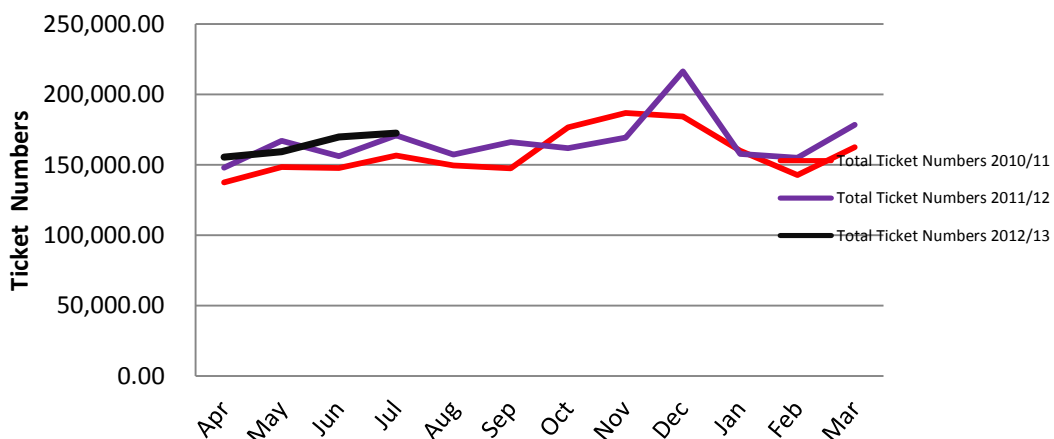


Total Daily Ticket Income 2010/11, 2011/12 and 2012/13 to July 2012



Total Summary Ticket Numbers 2010/11, 2011/12 and 2012/13 to July 2012



Notes:

- The income for end of Period 4 is £67k down against the budget for the year.
- The volume of tickets for the year to the end of period 4 is 15k higher than the same period in 2011/12.
- Albion Place: Note that there have been some technical difficulties and as such the following ticket volume data has been lost. (Machine 95 from 25th April to 11th May and Machine 98 from 25th April to 1st June.)
- St John's Surface: The closure was effective from 15th June, and has impacted on the figures
- Campbell Square: There appears to be a sharp increase in the income in June, which is not reflected in the ticket volumes. This is still being investigated.
- Additional Jubilee public holiday and free parking for the Torch Relay has impacted on income figures.
- One hour free parking offer has increased in the 2012/13 to 15,226 / month from 12,529 / month in 2011/12 – an increase of just over 21%.

- The loss of several Car Park Contracts due to the economic downturn and companies moving out of town has impacted.
- Mitigating actions being taken to address the fall in income for carparking include plans to target commuters who currently park at the railway station by offering a value for money parking contract to rail card holders and opening Mayhold and St Michaels for 24 hours to try to attract new business.